

深圳市鑫顺源国际物流有限公司

SHENZHEN MAXSPEED LOGISTICS CO., LTD



CONTENTS / 目录



公司简介

Company profile



企业文化

Corporate culture



员工风采

Employee style



服务内容

Service content



联系我们

Contact us



公司简介

Company profile

关于 我们

A B O U T U S

深圳市鑫顺源国际物流有限公司是经国家商务部、交通部和海关总署批准成立的国家一级国际货运代理企业，致力于提供全球展览品运输，国际集装箱海运，散货拼箱，国际航空运输，散杂货运输，租船，包机，多式联运，仓储，配送，代理报关，代理报检，代理进出口及运输保险等服务，是中国国内特点突出，服务全面得综合性国际物流企业。

Shenzhen Maxspeed Logistics Co., Ltd. is a national first-class international freight forwarding enterprise approved by the Ministry of Commerce, the Ministry of Communications and the General Administration of Customs. It is committed to providing global exhibition transportation, international container shipping, bulk cargo LCL, international air transportation, bulk cargo transportation, charter flight, multimodal transport, warehousing, distribution, customs declaration agency, inspection agency, import and export agency and transportation insurance services. It is a comprehensive international logistics enterprise with outstanding domestic characteristics and comprehensive services in China.

关于 我们

A B O U T U S

旗下 分属 公司 成立 时间 分别 为 :

The establishment dates of its affiliated companies are :

2011年10月25日 深圳市鑫顺源国际物流有限公司
October 25, 2011 SHENZHEN MAXSPEED LOGISTICS CO.,LTD

2019年12月13日 深圳市均升国际物流有限公司
December 13, 2019 SML GLOBAL LOGISTICS CO.,LTD

2021年02月05日 深圳市市均升国际物流有限公司中山分公司
February 05, 2021 SML GLOBAL LOGISTICS CO.,LTD ZHONGSHAN BRANCH

集团公司下服务网络覆盖香港, 深圳, 广州, 厦门, 宁波, 上海, 青岛, 天津等中国主要港口及空港城市, 国际代理网络遍及欧洲, 北美, 澳洲, 东南亚, 中东, 南美及非洲地区, 提供世界主要港口和空港的清关派送, 运费托收, 转运及三方贸易物流等增值服务。

The service network under the group covers Hong Kong, Shenzhen, Guangzhou, Xiamen, Ningbo, Shanghai, Qingdao, Tianjin and other major ports and airport cities in China, and the international agency network covers Europe, North America, Australia, Southeast Asia, the Middle East, South America and Africa, providing value-added services such as customs clearance and delivery, freight collection, transshipment and tripartite trade logistics of major ports and airports in the world.

关于 我们

A B O U T U S



“以人为本” 公司最重要的管理理念之一，鑫顺源因此非常注重企业内部文化建设和员工成长。长期与多个企业管理培训机构建立长期合作关系，把促进员工自身成长、实现个人价值和实现企业发展目标和谐统一。

立足于中国，面向全球。鑫顺源立志打造珠三角地区知名的物流品牌，在全球一体化的浪潮中更好地维护客户的权益，提供更优质现代化的物流服务。

Management concept

“People-oriented”
Pay great attention to internal culture construction and employee growth.

Management training

Establish long-term cooperative relations with a number of enterprise management training institutions, so as to promote employees' own growth, realize personal values and achieve enterprise development

Based on China, facing the world

Determined to build a well-known logistics brand in the Pearl River Delta region, better safeguard the rights and interests of customers and provide better quality and modern logistics services in .

人员资质

Personnel qualification

①拥有职业化程度高、专业化技能强高效高素质团队，凭借对货运行业资深专业地探究，时时掌握货运行业前沿动向，为客人提供优质便捷的物流服务。

We have a highly professional, highly professional, highly efficient and high-quality team. By exploring the freight industry professionally, we can keep abreast of the frontier trends of the freight industry and provide customers with high-quality and convenient logistics services.

②从事货运代理业务两年或两年以上的中国或境外公民，有一定的货运代理专业知识和实际操作（或企业管理）能力，并有相当程度的英语水平，并获得“FIATA 货运代理资格证书”的培训和考试。

Chinese or overseas citizens who have been engaged in freight forwarding business for two years or more have certain professional knowledge of freight forwarding and practical operation (or business management) ability, and have a considerable level of English, and have obtained the training and examination of FIATA freight forwarding qualification certificate.



企业文化

Corporate culture

核 心 价 值 观

C o r e V a l u e s

成就客户，诚信服务，合作共赢，开拓进取

Achievement of customers, Honest service, Win-win cooperation and Pioneering spirit.

致力于客户的满意和成功

Committed to
customer
satisfaction and
success.

100%



诚信为本，一诺必达

Honesty-based,
promise will be
achieved.

100%

员工、部门、同行以及和客户的团结合作
最后取得共赢

Employees, departments, peers and the
unity and cooperation with customers,
and finally achieve a win-win
situation.

100%

建立敢闯敢拼，勇猛上进
敢为人先，舍我其谁的团队

Establish a team that dares
to fight, be brave and
enterprising, dare to be the
first, and give up others.

100%

企 业 精 神

spirit of enterprise

1

客 户 至 上

不 抛 弃 不 放 弃

Customer first, never give up,
never give up

2

追 求 服 务

用专业降低成本 用高效回报客户
Pursue service, reduce costs with
professionalism and return customers
with high efficiency.

3

团 队 精 神

团 结 一 致 所 向 披 靡

Team spirit is United and invincible.

企业愿景

corporate vision

01.



为客户创造最大价值

Create maximum value for customers.



02.



为员工创造美好生活

Create a better life for employees



03.



打造国际一流供应链品牌

Build a world-class supply chain service brand





员工风采

Employee style

员 工 风 采

Enter your subhead line here



为了锻炼员工的意志力和团聚力，公司每年都会组织一次户外活动，

In order to exercise the willpower and cohesion of employees, the company organizes an outdoor activity every year.

more



员 工 风 采

Enter your subhead line here



为了让员工劳逸结合，公司每年都会安排旅游。



In order to combine employees' work and rest, the company arranges travel every year.

more



员 工 风 采

Enter your subhead line here



每月的生日会，给同事举行生日会

Every month's birthday party, a birthday party for colleagues.

more



员 工 风 采

Enter your subhead line here



为提高员工业务知识和工作技能,充分发挥员工潜力,公司定期为员工制度培训课程

In order to improve employees' business knowledge and work skills and give full play to their potential, the company regularly organizes training courses for employees.

more

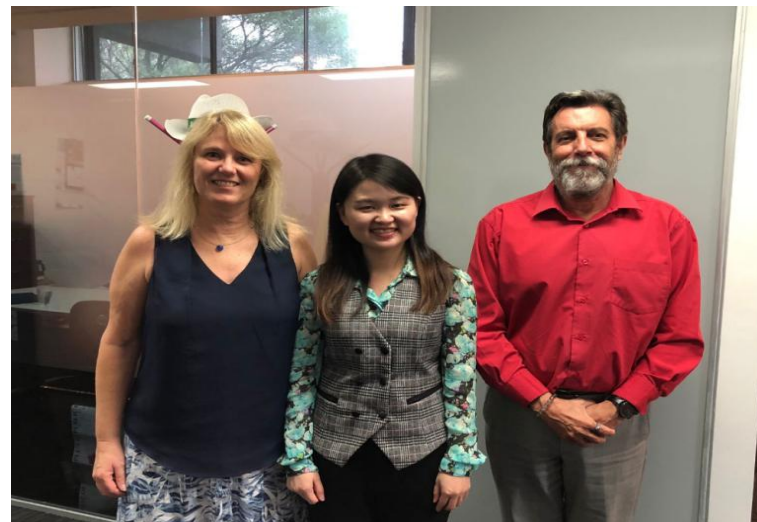


员工风采

Enter your subhead line here



与海外客户合作的拍照纪念



Photographic commemoration of cooperation with overseas customers



more





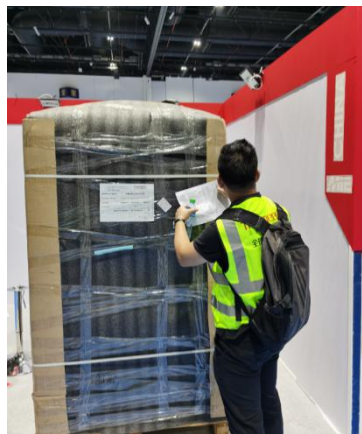
服务内容
Service Content

客户至上

Customer First

鑫顺源今日所获得的成就，离不开一路对我们及其信任和支持的客户，我们本着客户第一的服务理念，在每一个项目都追求完美，每一步服务都要求细致；我们及其真系来之不易的客户合作机会，也真诚地对待每一个客户，我们相信，日积月累的好感，会让我们在业内获取更多的忠实客户

MAXSPEED achievements today can't be separated from the customers who trust and support us all the way. Based on the service concept of customer first, we pursue perfection in every project, and every step of service requires meticulous care. We are a hard-won opportunity to cooperate with customers, and we treat every customer sincerely. We believe that the accumulated goodwill will enable us to gain more loyal customers in the industry.



关于服务

Enter your subhead line here

以客为先 Customer First

鑫顺源代理国际货运海空运出口服务，接受直接客户或其他货代公司客户的业务总包或者分包，设计并优化物流全过程方案，从境内发货人处提取货物，报关报检，组织国际运输活动，直至将货物分拨派送至境外收货人制定交货地点，对物流链上的货物流、单证流、信息流和资金流等开展全方位快速响应和低成本控制，满足客户门到门一站式跨境综合物流的全部需求。

MAXSPEED acts as an agent for the export service of international freight, sea and air transportation, accepts the general contracting or subcontracting of the business of direct customers or customers of other freight forwarding companies, designs and optimizes the whole logistics process scheme, picks up goods from domestic consignors, declares for inspection, organizes international transportation activities, and distributes and dispatches the goods to overseas consignees to set delivery locations, and carries out all-round rapid response and low-cost control on the goods flow, document flow, information flow and capital flow in the logistics chain, so as to meet all the needs of customers' door-to-door one-stop cross-border integrated logistics.





联系我们
Contact us

联系我们

CONTACT US



0755-82432866



Tony@szmaxspeed.com



www.szmaxspeed.com



广东省深圳市罗湖区嘉宾路4028号太平洋商贸大厦B座1006-1008
Room 1006-1008, Block B, Pacific Business Building, No.4028
Jiabin Road, Luohu District, Shenzhen City, Guangdong Province

THANKS

感谢您的时间